



IMPACT

MAY–JUNE 2017

FoundCom.org
Visit to get involved!

Making New Memories at Lakeline Station

Reflecting on his own life is hard for Keith Murphy. The 34-year-old father of three experienced a childhood full of painful memories. Years in the foster care system and subsequent abuse made Keith feel as though he would never find a real family. That is until he met Kelli, his wife, in high school.

"I still remember the exact moment we met," Keith said. "She got off the bus and I walked her home. From that day forward, my life changed."

Keith and Kelli fell in love fast but struggled financially. Keith didn't finish high school and had a hard time finding steady work, bouncing around from job to job as a mover and day laborer, and landing various gigs through temp agencies.

As their family grew, the rising cost of living in Austin made it nearly impossible for them to find a home they could afford. Then, Keith was laid off from a health care job when business slowed down. Keith, Kelli, and their three children ended up moving into a 2-bedroom apartment with Kelli's mother. The entire family stayed in one room and the lack of space and freedom took a toll on all of them.

It turns out our Trails at the Park community was close to where they were staying so Keith and Kelli enrolled their daughters, Ramiyah and Pfenix, in our after-school program. As Kelli learned more about our housing, she discovered that they qualified for our Children's Home Initiative (CHI) program for extremely low-income families. The family was accepted and moved to our new Lakeline Station community in Northwest Austin last December, just in time for Christmas.



"My kids were the first to play on the beautiful playground," Keith said.

Since living at Lakeline, Kelli has secured a better job at a health insurance company, the kids are thriving in school, and, as soon as they find affordable childcare for Keith Junior, their son, Keith plans to attend barber college.

"Living at Lakeline has opened so many doors for us," Keith said. "Doors that I didn't even know existed."

The family meets weekly with an on-site case manager to help set goals and become more financially stable.

In addition, the Michael & Susan Dell Foundation Learning Center at Lakeline opened this month and Ramiyah and Pfenix will soon attend our summer learning and after-school programs.

For Keith, Kelli, and their children, Lakeline is much more than just a home. It's a place where they can all live up to their potential and dream big. "My kids are my world, and I'm determined that when they look back on their lives, their childhood memories will be full of joy instead of pain," Keith said. "I want them to be happy and healthy and know that we'll always be there for them."

Lakeline Station is the third affordable housing community we opened this year. We also welcomed home nearly 300 residents at Bluebonnet Studios on South Lamar and Live Oak in Oak Hill.

WE'RE RECRUITING VOLUNTEERS!

Did you know our many meaningful, rewarding volunteer opportunities are available year-round? Join us for Volunteer 360, our annual volunteer fair, to learn how you can stay involved with us. We're currently recruiting volunteers for supper clubs, learning centers, welcome home baskets, and ESL classes.



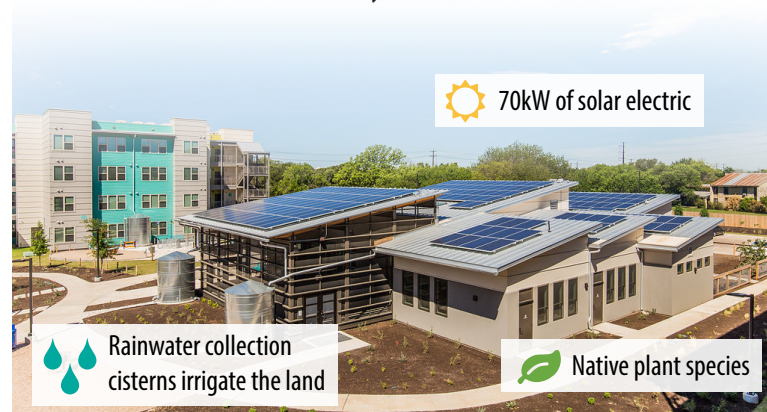
Monday, June 5 6:00–7:30pm Sierra Vista Learning Center

VOLUNTEER 360

RSVP by May 31
foundcom.org/get-involved

Our Greenest Learning Center

The **Michael & Susan Dell Foundation Learning Center** at Lakeline Station officially opened this month! It will be the beating heart of this new community, where our kids participate in after-school and summer learning programs and where our other on-site programs, like fitness and nutrition classes, take place. It's also the greenest Learning Center we've ever built! The building will ultimately produce more energy than it consumes, making it the first net-zero energy commercial building in Austin. Building green is good for us, our residents, and our beloved city!





3036 South First Street
Austin, TX 78704
512.447.2026
FoundCom.org



Board of Directors

Tom Chmielewski, Chair	Dalton Duffie
Jewel Arrington	David Hart
Yvette Boatwright	Freddy Marichal
Perla Cavazos	Selina Serna
Andrew Clements	David Tandy
Kellee Coleman	Michelle Wallis
Adrianna Cuellar Rojas	Alicia Wong
Charles DiTullio	
Walter Moreau, Executive Director	

Foundation Communities provides attractive, affordable homes and free on-site support services for thousands of working families with kids, as well as veterans, seniors, and individuals with disabilities. We offer an innovative, proven model that empowers our residents and neighbors to achieve educational success, financial stability, and healthier lifestyles. We own and operate 22 properties in Austin and North Texas.

Construction is moving along at Cardinal Point, our future affordable housing community in the Four Points area. Cardinal Point will be home to 120 families and will begin leasing later this year.

CONSTRUCTION UPDATE



FOUNDATION COMMUNITIES UPDATES

Meet Our New Case Managers ▶

At all of our communities, on-site case managers are ready to assist families and individuals as they navigate their new beginnings. We're shining a light on three staff members at our newest communities who do this important work every single day. We asked them – **What inspires you about your job?**

We're Proud to be Volunteer-Powered!

Forget about Wonder Woman or Batman, our 2,500+ dedicated and passionate volunteers are the REAL superheroes! Volunteers make our education, financial stability, and health programs possible. We're only able to serve thousands of people because our volunteers are deeply committed to making a difference in their neighbors' lives.

Here are some highlights of our work together from the last year:

SUPPER CLUBS	740 volunteers	4,626 meals	LEARNING CENTERS	207 volunteers	1,000+ students mentored
INSURE CENTRAL TEXAS	63 volunteers	4,700+ enrolled in health insurance	COMMUNITY TAX CENTERS	601 volunteers	19,000+ tax returns

Thank you to each and every one of our incredible volunteers! Special shout-out to our Insure Central Texas and Community Tax Center volunteers for recently wrapping up successful seasons with remarkable community impact!



achieve all three." – *Lori Burnett, Supportive Services Program Manager at Bluebonnet Studios*

"I get to witness the small victories. The things that many of us take for granted, like being able to have an emergency fund, is such a big accomplishment for the families I serve. Seeing them open a savings account is inspiring."

– *Rosemary Castro, Children's Home Initiative Case Manager at Live Oak*



"I grew up in an economically disadvantaged family, and I can relate to the daily struggles that residents face. My upbringing inspires me to share my knowledge and explore opportunities for residents to better themselves and to break the cycle of intergenerational poverty." – *Linda Vargas, Children's Home Initiative Case Manager at Lakeline Station*