

## *What we do*

### 2017 ENROLLMENT

**5,154**

individuals enrolled  
in health coverage

tax credits claimed to  
make monthly  
premiums affordable

**\$16.3  
MILLION**

federal subsidies  
claimed to lower  
copays & deductibles

**\$17.9 MILLION**

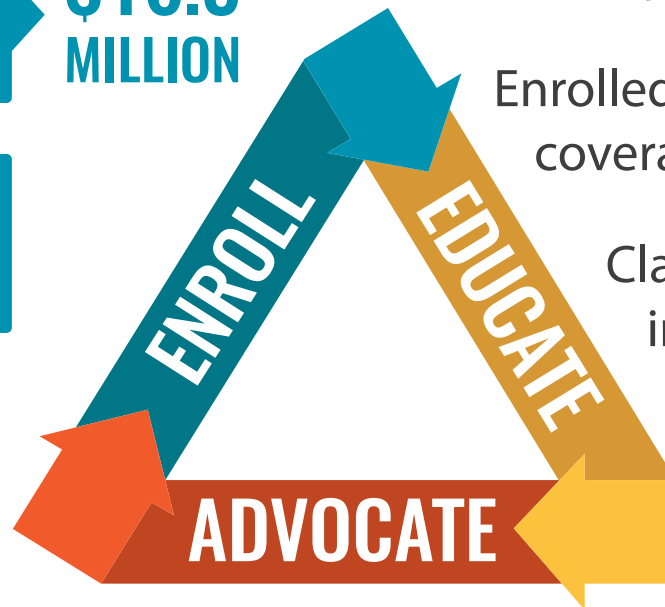
### IMPACT SINCE 2014



Served **45,000+** appointments

Enrolled **22,800+** in health  
coverage

Claimed **\$61 million**  
in tax credits to  
make insurance  
affordable



**86**

local  
partners

**61**

volunteers  
who donated

**2,264**

hours

*Thank you to...*

# Who we serve



accessed health coverage through our partnership with HAAM

6,316

2017 Open Enrollment

2,065

Feb - Jul 2017

1,913 musicians



92%

qualified for financial assistance to reduce cost of insurance

38%

had a parent who was uninsured at the time of their enrollment

45%

speak a language other than English

17%

live with complex medical conditions (diabetes, cancer, HIV, MS, etc.) requiring extensive navigation assistance

58%

identify as a person of color

we served families from

121 zip codes

“ Foundation Communities [has] done an outstanding job overcoming one bureaucratic obstacle after another to link affordable health insurance with our neighbors. ”

Congressman Lloyd Doggett

January 30, 2017



## MEET MELISSA

Having never had insurance as an adult, Melissa enrolled in Marketplace insurance by phone. She got tax credits but missed out on subsidies that would have reduced her deductible from \$6,450 to \$0. Soon after, she went to the ER and left with a hefty hospital bill and a referral to an oncologist.

## HOW WE HELPED

**EDUCATED** Melissa on health insurance basics and specifically how her plan worked. Served as a resource for Melissa throughout the year.

**ADVOCATED** for Melissa by setting up payment plans with providers. Armed Melissa with questions to ask before her next surgery to avoid unexpected costs.

**ENROLLED** Melissa's family in a 2017 plan that covers their doctors and claims all the subsidies, so they now pay \$31.87/month with \$0 deductible and \$1,700 maximum.

## THE HAPPY ENDING

After being diagnosed with kidney cancer in 2016, Melissa is now cancer-free.